

Revitalisation of Spikeri Square and Daugava Waterfront promenade



Master Plan

● Location / Riga, Latvia ● Area / 5.7hectares (14.8 acres)
● Length / 1.6 kilometers(1 mile) ● Completion / 2013 ● Landscape
Design / Arplan, Ltd., A plus Architects, Ltd. ● Photographer / Aivars
Silins, Ilze Denisova ● Client / Riga City Council City Development
Department ● Budget / Euro €7,831,152

Based on the consideration of its geographical closeness to the old city,the revitalization of the Spikeri area has organically improved the urban infrastructure for people and creative industries, services and facilities located in this area. This is done by creating a new and

modern open public space that offers new recreation possibilities, by reconstructing the former pedestrian underpass, by connecting it to the city with pathways, quaysanda new bicycle lane. The territory now meets all the accessibility requirements. It invites people of all ages to use this openair public space for a wide range of activities.

To avoid intense traffic noise, green islands are created along the Krasta Street (in place of the former warehouses) with a green slope towards the street and seats for the visitors towards the Spikeri square. The main street in the Spikeri area connects the central market and the Daugava Waterfront, offering a new recreation area with decorative flowerbeds, benches and lighting.

New ramps and stairs lead from the Spikeri area towards the reconstructed pedestrian underpass, connecting the Daugava Waterfront promenade with the city and providing access also for the disabled.

The revitalization of the Daugava Waterfront, stretching 1.6kilometers along the Krasta Street and the river, offers new recreation areas with water play activities, quays, sunbathing benches, a new bicycle laneand a skate park.

The waterfront along the Spikeri area extends the promenade in front of the old city, offering a wide range of public activities in the open cityscape, as well as exclusive view to Riga's bridges, the old town and the new National Library of Latvia. Tge revitalization of the waterfront includes completely new infrastructure of the embankment that has also been renovated and reinforced.

Local materials and techniques have been used in the creating of the project. Modular benches, green walls and other elements are designed exclusively for this project. The new waterfront infrastructure provides rainwater drainage and lighting. Stormwater management system is connected to the city's sewer system. New quays for water transport have been created. New greenery, decorative flowerbeds and trees have been established.

01 outdoor balcony
02 north contemplation room

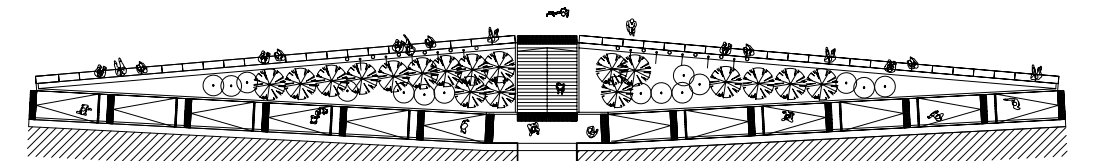


- 01 outdoor balcony
- 02 Bio-indicators of the quality of the water, water lilies have been planted
- 03 outdoor balcony
- 04 north contemplation room

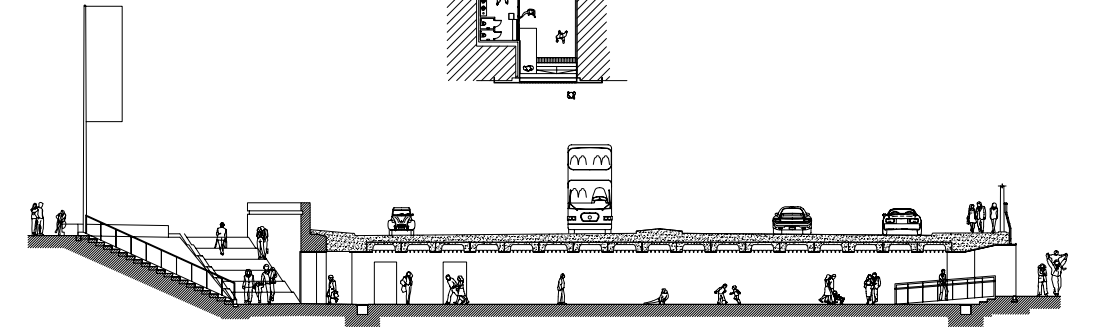




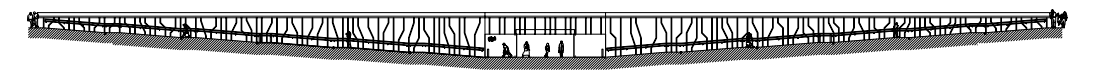
- ① outdoor balcony
- ② north contemplation room
- ③ terrazzo floor
- ④ Around an useful and educational route,
- ⑤ water is exploited in all its forms



Pedestrian underpass floor plan



Pedestrian underpass section



Pedestrian underpass elevation



- 01 outdoor balcony
- 02 north contemplation room
- 03 outdoor balcony
- 04 north contemplation room

