

REVITALIZATION OF SPIKERI SQUARE AND DAUGAVA WATERFRONT PROMENADE IN RIGA, LATVIA

August 2013 (started 2011)

Arplan, Ltd (Riga, Latvia; est. 2001) - Mgr. Arch. **Rolands Bruzgulis**
A plus Architects Ltd. (Riga, Latvia; est. 1993) - Mgr. Arch. **Dace Kalvane**

Client (Public): Riga City Council City Development Department

Programme: Waterfront

Waterfront length 1 600.00 m

Project area 57 582.00 m²

COLLABORATORS:

Ksenija Semjonova (Technical architect), Valters Bruzgulis (Technical architect)

Salvis Stafeckis (Technical architect), Rihards Millers (Technical architect)

Laura Birstina (Landscape architect), Kristine Svalbe (Landscape architect)

Normunds Berzins (Furniture), Juris Cekulins (Lighting)

Elmars Danisevskis (Access), Anda Melkersone (Access)

Janis Razna (Structural engineering), Andris Razgalis (Structural engineering)

Andris Zvirbulis (Structural engineering), Aleksandrs Cernihs (Structural engineering)

Armands Kozlovs (Electrical), Gunta Zilite (Electrical), Maksims Cubarovs (Electrical)

Svetlana Kirilenko (Electrical), Ilgvars Kozlovs (Electrical), Peteris Bikis (Electrical)

Ingus Mozalevskis (Electrical), Eduards Lusis (Electrical)

Olga Tomiseva (Hydraulic), Igors Tomisevs (Hydraulic)

Pavels Tihomirovs (Quantity surveyor), Janis Kundzins (Collaborator (external))

Janis Silins (Collaborator (external)), Ojars Jaksts (Collaborator (external)), Janis Donins (Construction manager)

PHOTO CREDITS:

Aivars Silins

Ilze Denisova

Kaspars Alksnis

Laura Birstina



Daugava waterfront along the former warehouse area Spikeri is located in the UNESCO World Heritage site - historical center of Riga, the capital of Latvia. Revitalisation of the Spikeri square and the Daugava waterfront promenade has created a new and modern open public space, offering citizens new recreation possibilities, prolonging bicycle lane from the city center towards outskirts, accessibility to the water, new quays for boats and ships. The whole Spikeri area and the waterfront promenade is now easily accessible from the city center and surrounding districts.

The Project contains the revitalization of the public space in the area of Spikeri and its adjacent waterfront promenade. Historically, Spikeri was a district with 58 warehouses, built in the late 19th century, to store cargo from ships and train freights. Nowadays only 13 warehouses have been preserved, yet it is enough to feel the historic atmosphere there. The Spikeri area is housing creative industries, restaurants and offices, as well as the Ghetto museum.



The revitalization project includes the reconstruction of the former pedestrian Tunnel, connecting Spikeri area with the Daugava waterfront, allowing access for cyclists and handicapped people.

The revitalized Daugava waterfront promenade covers 1,6 km along the river and the Krasta street, offering new bicycle lane, recreation area, quays, skate park.

BEFORE



REVITALIZATION OF SPIKERI SQUARE AND DAUGAVA WATERFRONT PROMENADE

Spikeri square is an open public space, constantly exposed to the changes of the urban development and society evolution process, though the historical environment is authentic and multi-layered, reflecting the citizen attitude towards cultural and historical values, accumulated there over the centuries.

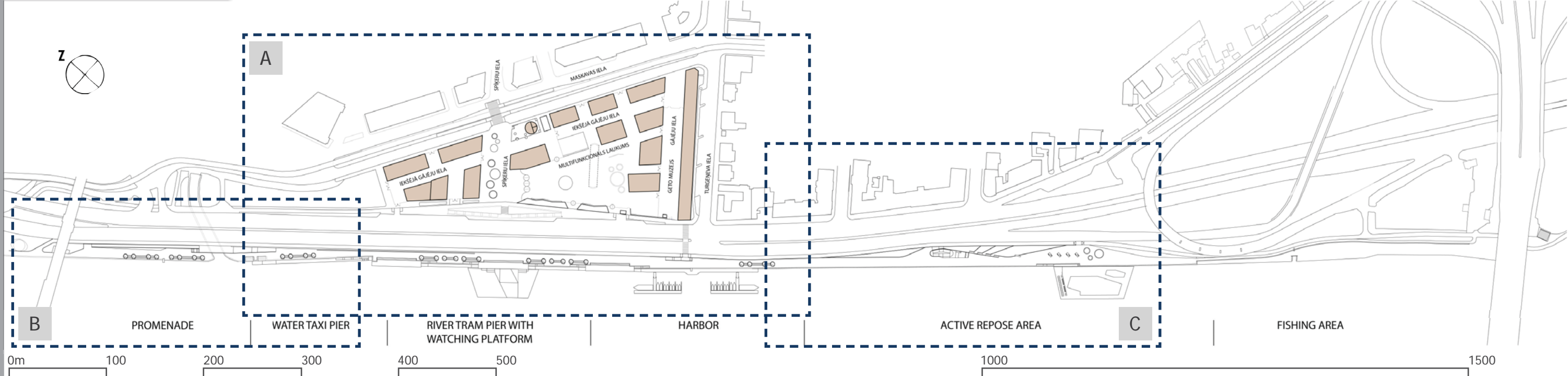
Revitalization of the Spikeri area considers the geographical closeness to the Old city, organically improving the urban infrastructure for creative industries, services and facilities, located in this area. The revitalization deals with adapting the Spikeri square for a wide range of public events, offering also a playground for children and an acoustic object.

To avoid the intense traffic noise, green barrier was created along the Krasta street (matching the location of the former warehouses) with a green slope towards the street and seats for the visitors towards the square. Spikeri area is well known with its contemporary music concerts, cinema arrangements, cultural festivals ("White nights", "Staro Riga", etc.), art galleries, offices, cozy restaurants and cafes. Main pedestrian street in the Spikeri area, connecting the Central market and the Daugava waterfront, offers a new recreation area with decorative flowerbeds, benches and lighting.

There are new ramps and stairs leading from the Spikeri area towards the reconstructed Tunnel, connecting the waterfront promenade with the city and providing access for cyclists and handicapped people. Additionally, on the ground level, a new pedestrian crossing of the Krasta street is organized.

The waterfront along the Spikeri area extends the promenade in front of the Old city, offering a wide range of public activities at and on the water, quays for the river boats and ships, new bicycle lane connecting Riga center with its outskirts, sunbathing benches and a skate park.

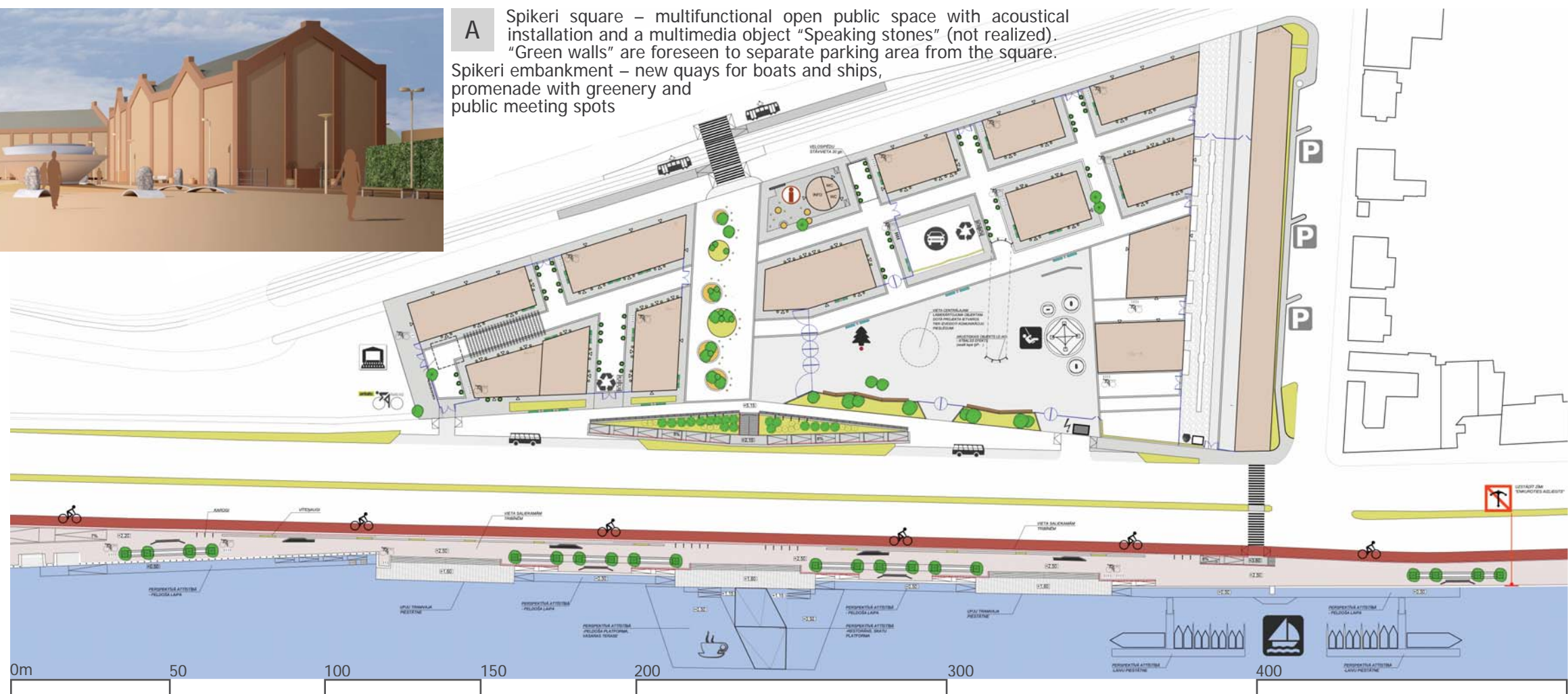
By narrowing Krasta street traffic lines to a regular standard, new tourist bus parking lots in front of the Spikeri area and a new bicycle line separately from the recreational area on the Daugava embankment were created. Revitalization of the waterfront also includes the reconstruction of the embankment infrastructure, as well as new greenery such as trees and decorative flowerbeds.



Main goals of the revitalization project were:

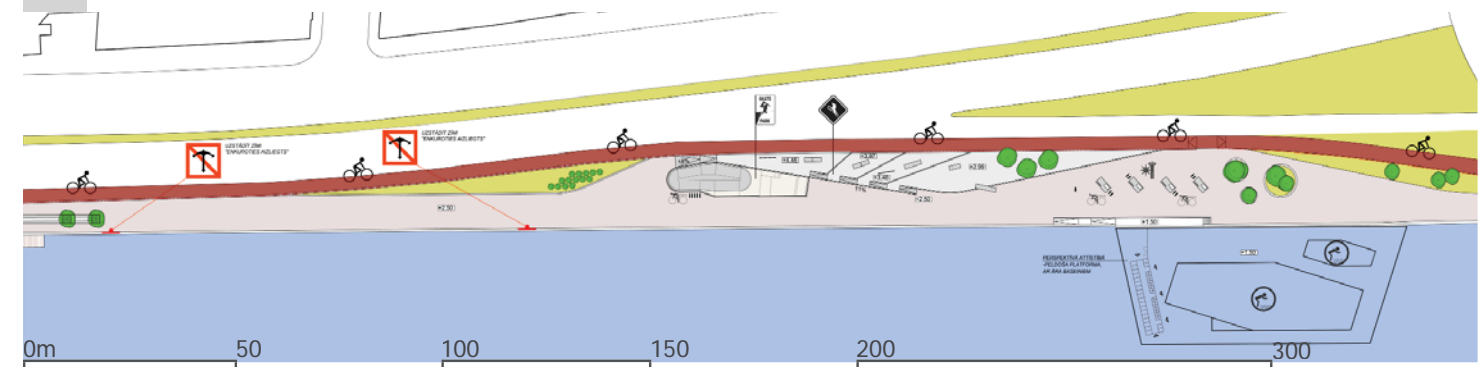
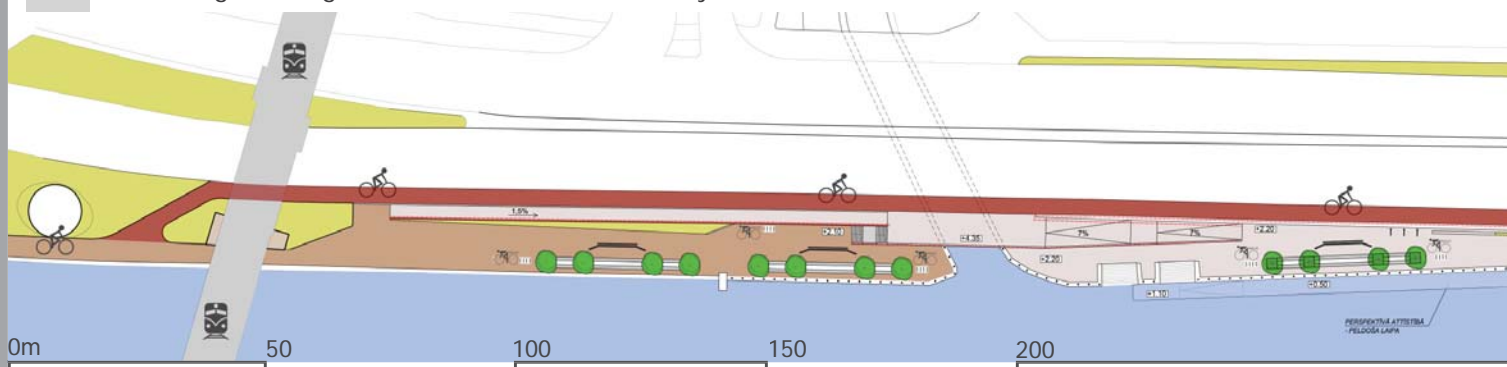
- to design recreation areas according to the local climate, facing south and avoiding main wind flows,
- to facilitate accessibility and application of the waterfront (A, B, C),
- to rearrange Spikeri area and the central square (A) as an open public space,
- to reduce the traffic impact on the open urban areas,
- to create a safe crossing of the Krasta street and provide a comfortable connection to the waterfront,
- providing additional functions such as public facilities, exhibition hall, etc., by reconstruction of the tunnel,
- to ensure free access to the water, creating recreation areas along the water,
- to separate bicycle line from the recreation area (B),
- to introduce a number of new recreation activities – skatepark (C), angling, sunbathing,
- creating possibilities for various water activities.

A Spikeri square – multifunctional open public space with acoustical installation and a multimedia object “Speaking stones” (not realized). “Green walls” are foreseen to separate parking area from the square. Spikeri embankment – new quays for boats and ships, promenade with greenery and public meeting spots



B Bicycle line, connecting the Old city with outskirts of Riga, is separated from the active recreation area, offering exclusive view of Riga’s bridges and the new National Library of Latvia.

C Active recreation area with sunbathing benches, skateboard area and angling possibilities.



SPIKERI SQUARE



The main pedestrian street of Spikeri area is connecting the waterfront area with the adjacent Maskavas street.

There are decorative lights and precasted concrete flowerbeds with seating on the street.

In the background – Krasta street and Spikeri square.



Aerial view of the square. At the bottom of the picture – the inner street connecting the Maskavas street (on the left) and the waterfron promenade (on the right).

Historical warehouses and the Spikeri square are located between Maskavas and Krasta streets.

The long building volume in the background of the picture is the Ghetto museum.

Reconstructed tunnel from the Spikeri area to the Daugava promenade offers public facilities and exhibition hall.

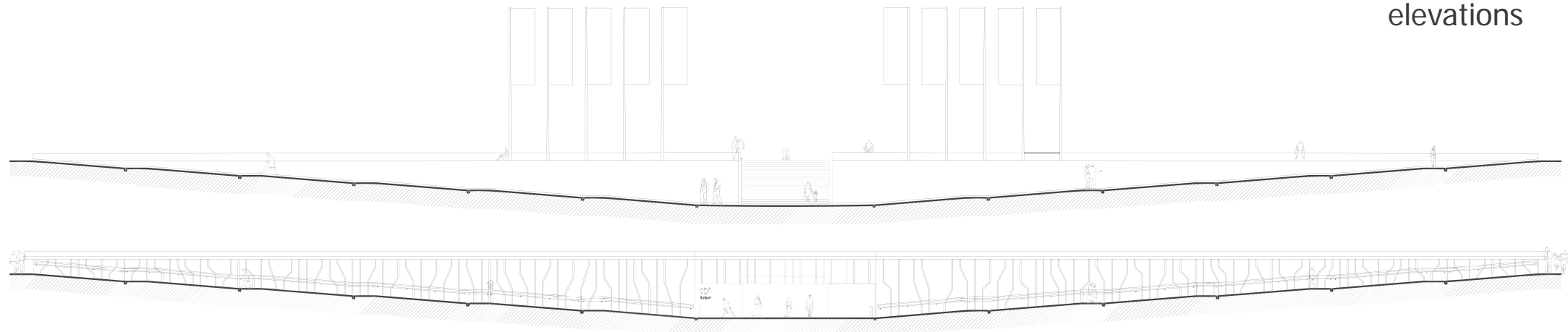
Finish and design elements are in rusty steel.



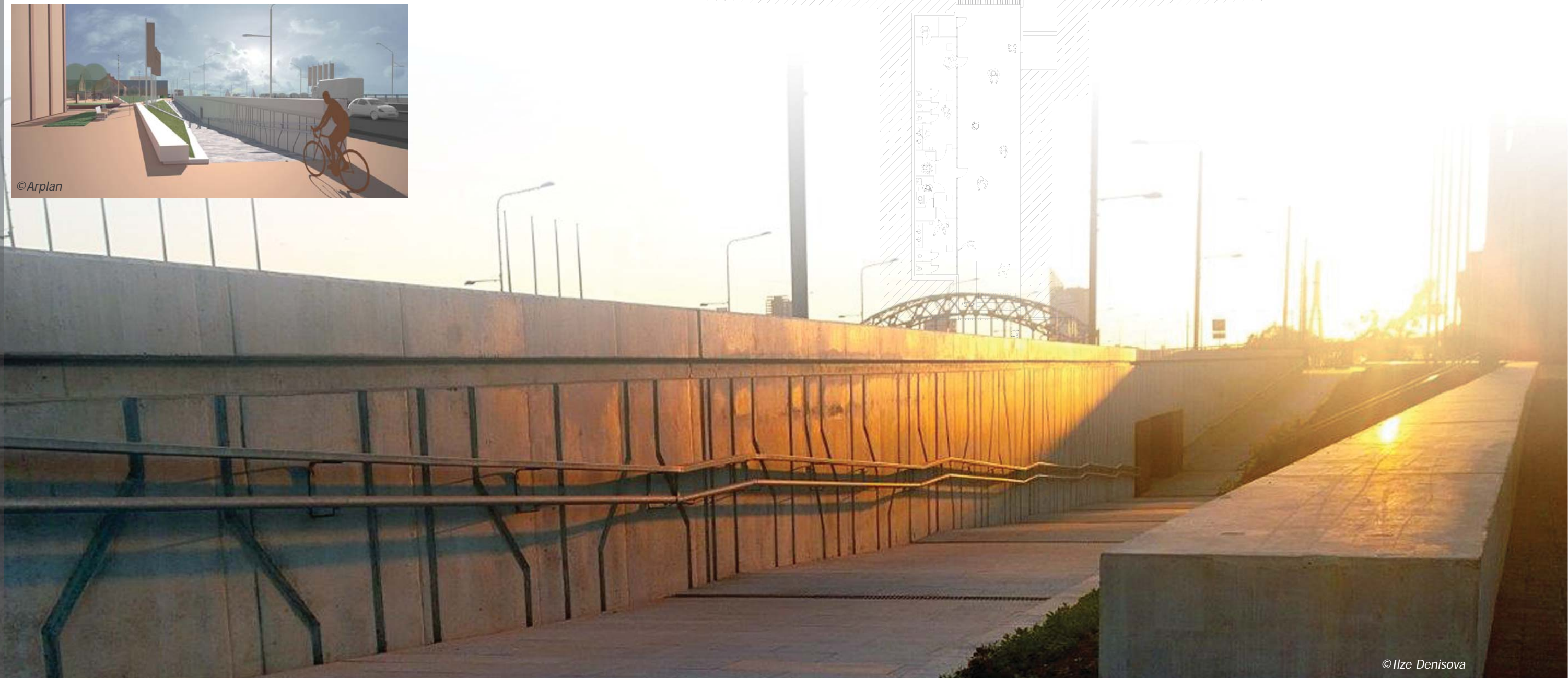
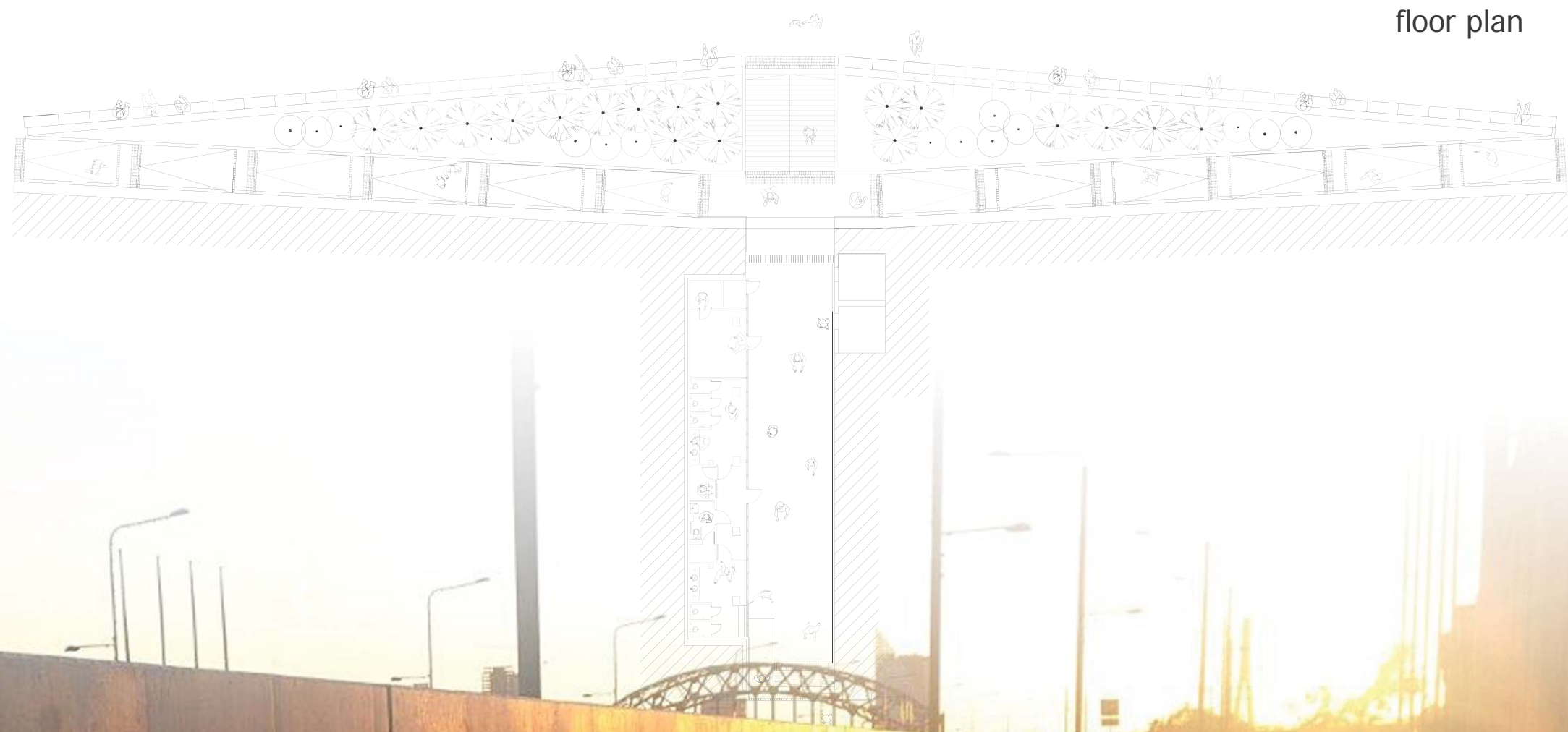
The ramp to the Tunnel connecting the Spikeri square and the Daugava waterfront promenade. On the left side – the Spikeri square, on the right side – the adjacent Krasta street with intensive traffic.



PEDESTRIAN UNDERPASS - CONECTION elevations



floor plan

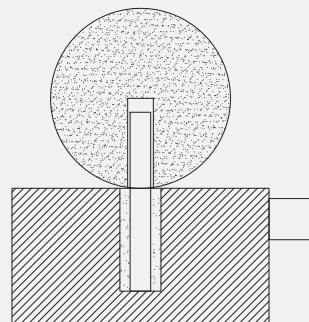


REVITALIZATION OF SPIKERI SQUARE AND
DAUGAVA WATERFRONT PROMENADE



bollards

Material - prefabricated concreat



©Aivars Silins

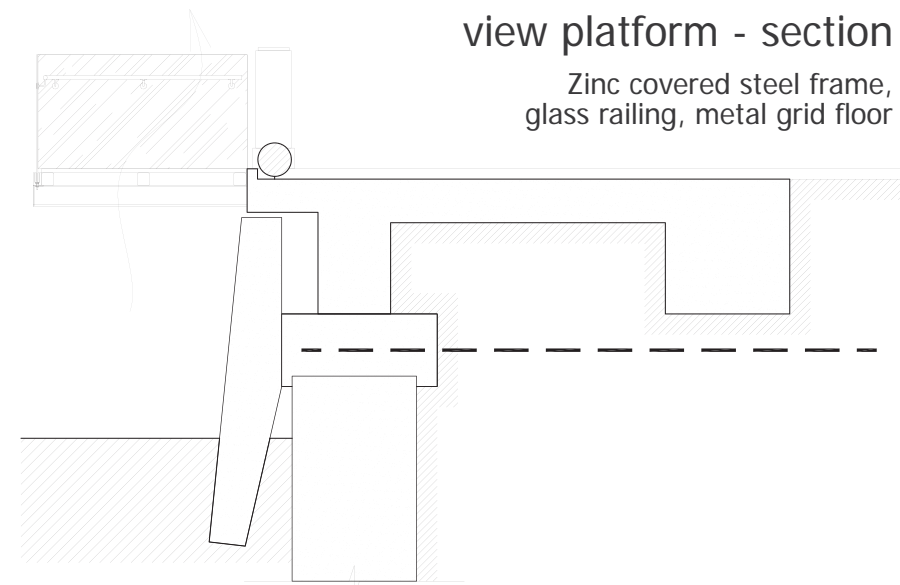
In the revitalisation of the Spikeri square and Daugava waterfront promenade local materials (prefabricated and casted in situ concrete, zinc covered and powder coated steel, rusted steel, wood, plastic) and other techniques have been used. Quays for water transport are reconstructed.

Waterfront promenade. Access to water and boat dock. This place historically and nowadays is very liked and used by fisherman. The Salu bridge in the background.

DAUGAVA WATERFRONT PROMENADE details

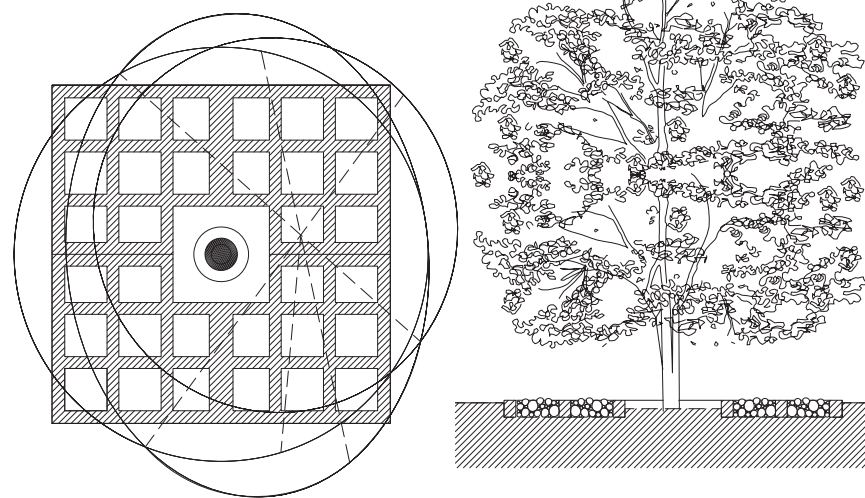
view platform - section

Zinc covered steel frame, glass railing, metal grid floor



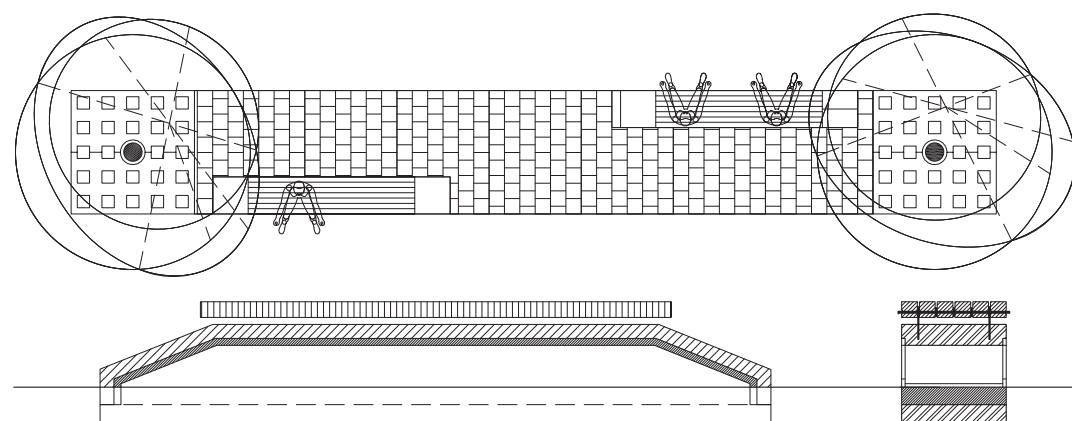
tree protector

Prefabricated concreat and gravel



free standing bench

Base - prefabricated concrete, top - thermowood



The promenade of Daugava waterfront. Access to the riverside. The Railway and the Cable bridge in the background.

Waterfront promenade. On the left – Krasta street. On the right side the cantilevered view platform. In the background the Salu bridge connecting both sides of the river.



©Aivars Silins



©Ilze Denisova



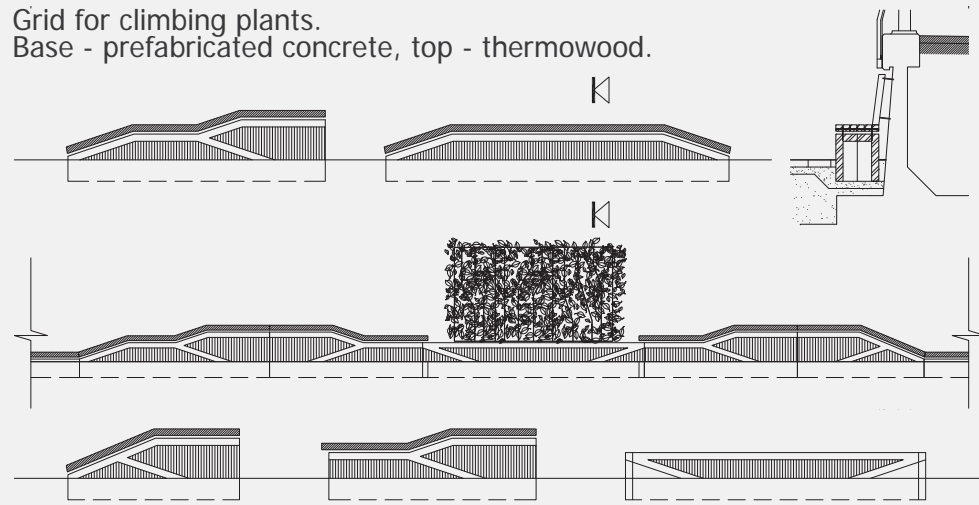
©Aivars Silins



©Ilze Denisova

wavy modular concrete bench

Grid for climbing plants.
Base - prefabricated concrete, top - thermowood.



On the left side Krasta street with the recreation line and seating two meters below it, running parallel to the street and riverfront and facing the Daugava river.



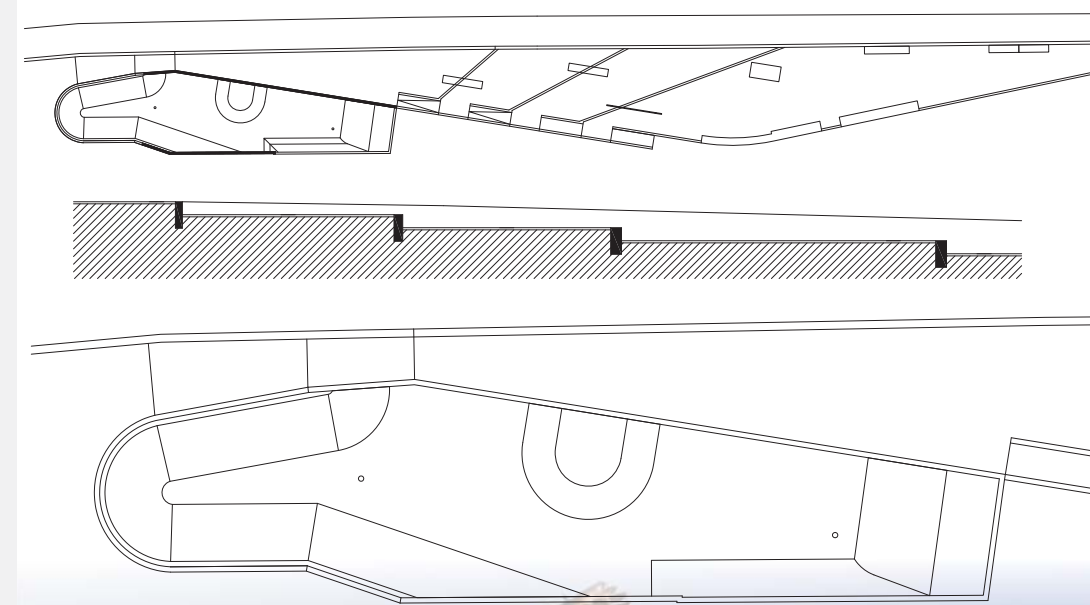
The new technical infrastructure provides rainwater drainage, electric supply and lighting for the waterfront. Waterfront promenade exposes individually designed urban infrastructure elements – several types of benches, information signs, flowerbeds, trashcans, bicycle stands, several types of railings and bollards, as well as observation platform.



DAUGAVA WATERFRONT PROMENADE

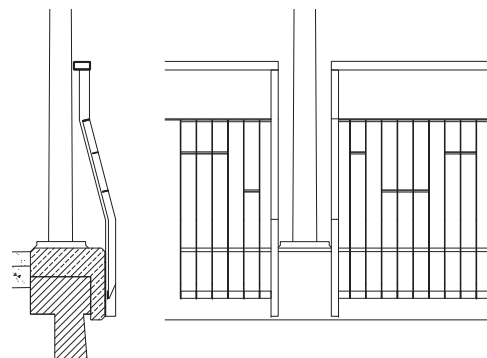
details

terraced skatepark, concrete ramps



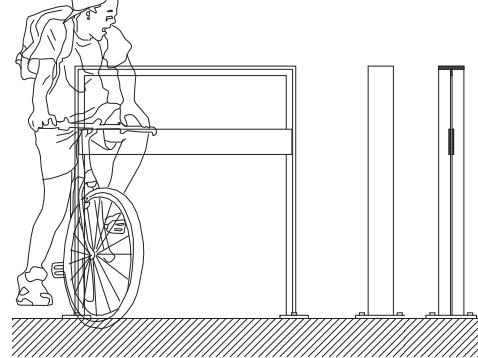
railing

Steel, zinc coated



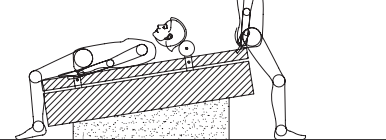
bicycle rack

Steel, powder coated paint



sunbath platform

Base - prefabricated concrete, top - thermowood



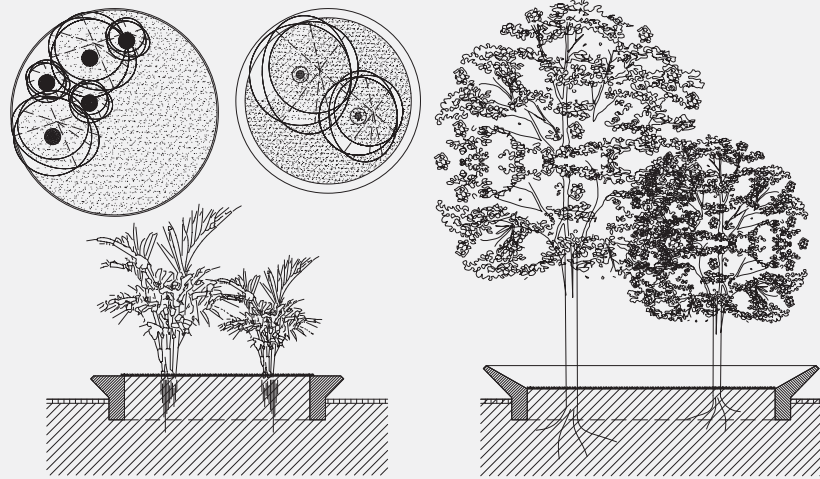
Waterfront promenade.
Resting bench / platform.

In the background - the Railway bridge and the National Library of Latvia.



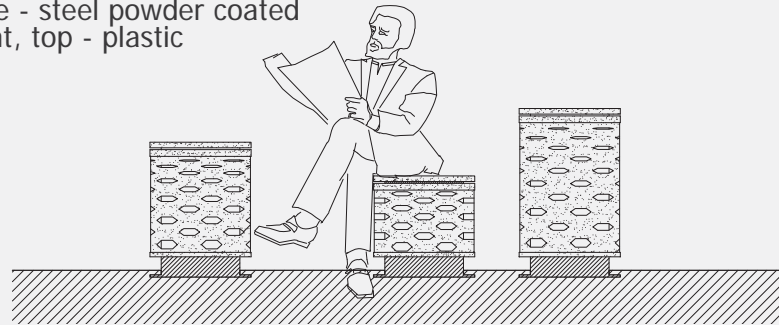
concrete flower bed with seating edge

Prefabricated concrete



round perforated seating

Base - steel powder coated paint, top - plastic

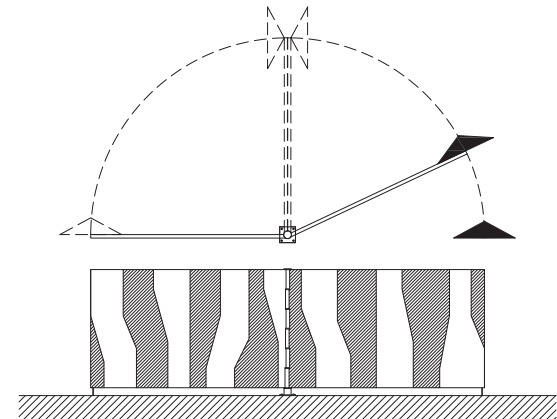


SPIKERI SQUARE details

details

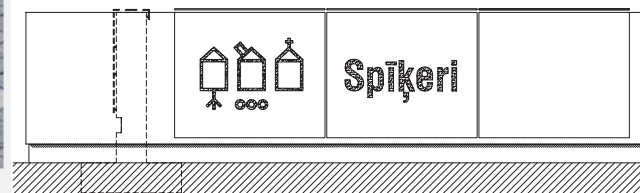
revolving gate

Steel, zinc powder coated paint



concrete, cast in situ signage on retention wall

Rusted steel, background lighting



perforated benches

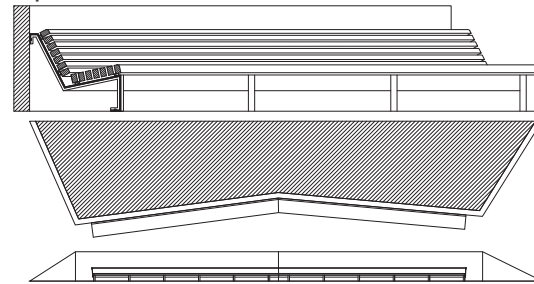
steel, powder coated,
top - thermowood



Recreation area with benches.
In the background the historical Spikeri warehouses, movable railings and entrance gates in case of public events.

retention wall benches

Base - powder coated paint,
top - thermowood

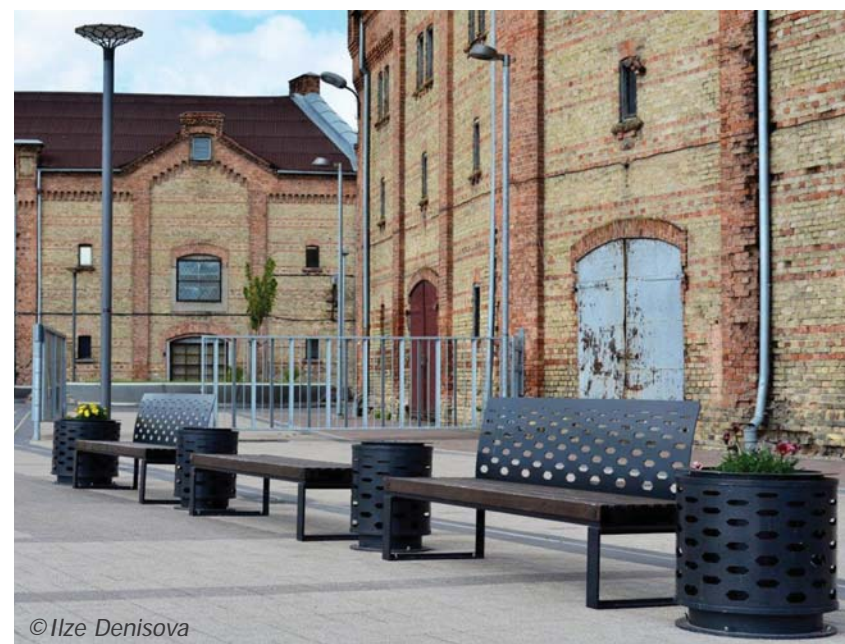


The cast in situ retention concrete wall separating the intensive traffic Krasta street and Spikeri square. The wooden benches are located along the inner edge, facing the square.



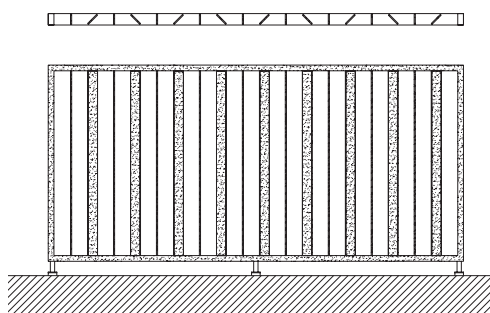
freestanding signage

Steel, powder coated paint



fence

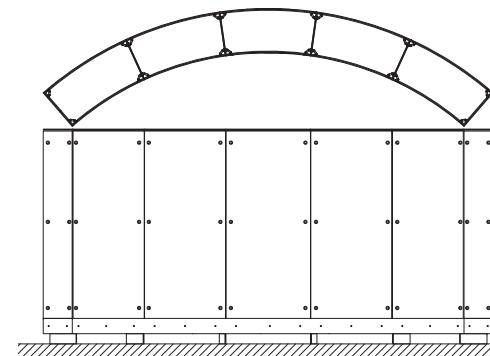
Steel, zinc coated



Looks different on different angles.

transparent acoustic object

Steel, zinc coated, hopolicarbon,
background lighting



Open space for public and cultural events, during winter skating rink. In the background children's playground and the historical warehouses are located .
The children's playground and an environmental object - acoustic installation in front of the historical warehouses.

